

Label Plants (Wristbanding)

Last Modified on 08/05/2019 12:49 pm MST

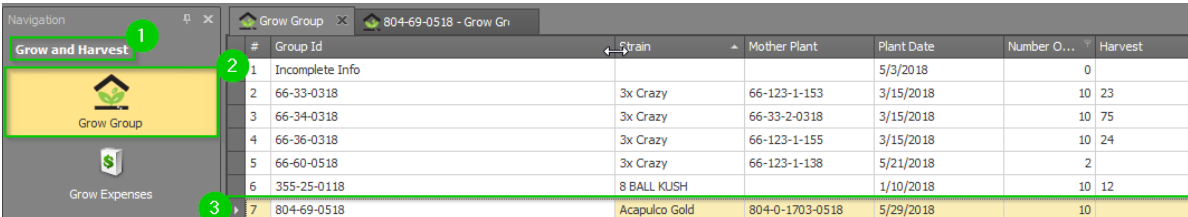
It's pretty hard to put a barcode sticker on a Plant, so KLĒR THC developed Wristbands instead! These Plant-friendly, color-coded tags can be wrapped around the Plant itself to make inventory and inspections quick and easy. This article will walk you through the basics of labeling your Plants.

If you would prefer to print standard labels instead of Wristbands, let your KLĒR THC representative know and it can be set up in your instance of KLĒR THC.

Print Wristbands

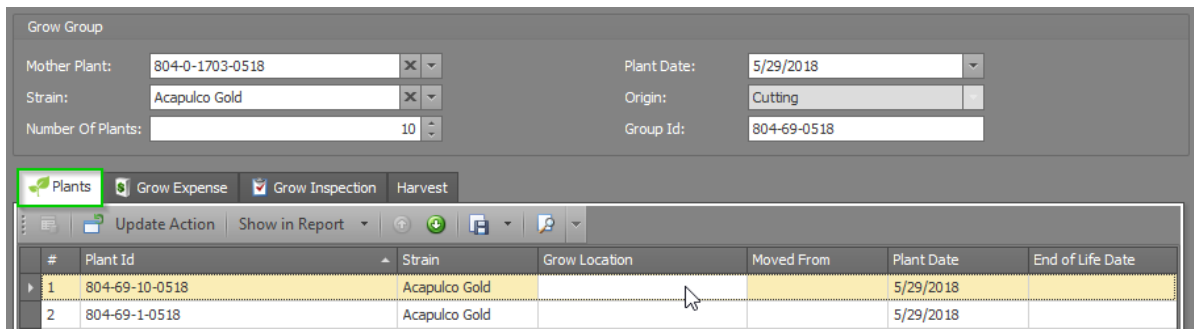
Wristbands can be printed for one Plant at a time or for an entire Grow Batch (10 per sheet). To print Wristbands for your Plants, follow the steps below:

- Step 1 - From the **Grow and Harvest** module, select the **Grow Batch** section. Then, double-click on the desired Grow Batch to open the Grow Batch detail window for the Plants for which you want to print Wristbands.

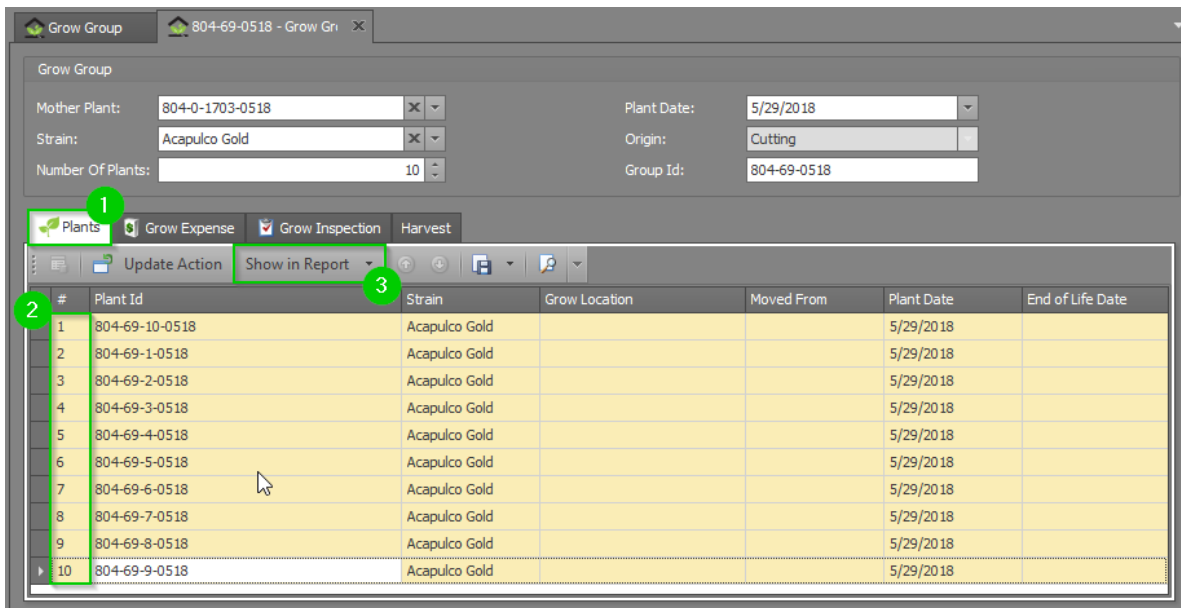


#	Group Id	Strain	Mother Plant	Plant Date	Number O...	Harvest
1	Incomplete Info			5/3/2018	0	
2	66-33-0318	3x Crazy	66-123-1-153	3/15/2018	10	23
3	66-34-0318	3x Crazy	66-33-2-0318	3/15/2018	10	75
4	66-36-0318	3x Crazy	66-123-1-155	3/15/2018	10	24
5	66-60-0518	3x Crazy	66-123-1-138	5/21/2018	2	
6	355-25-0118	8 BALL KUSH		1/10/2018	10	12
7	804-69-0518	Acapulco Gold	804-0-1703-0518	5/29/2018	10	

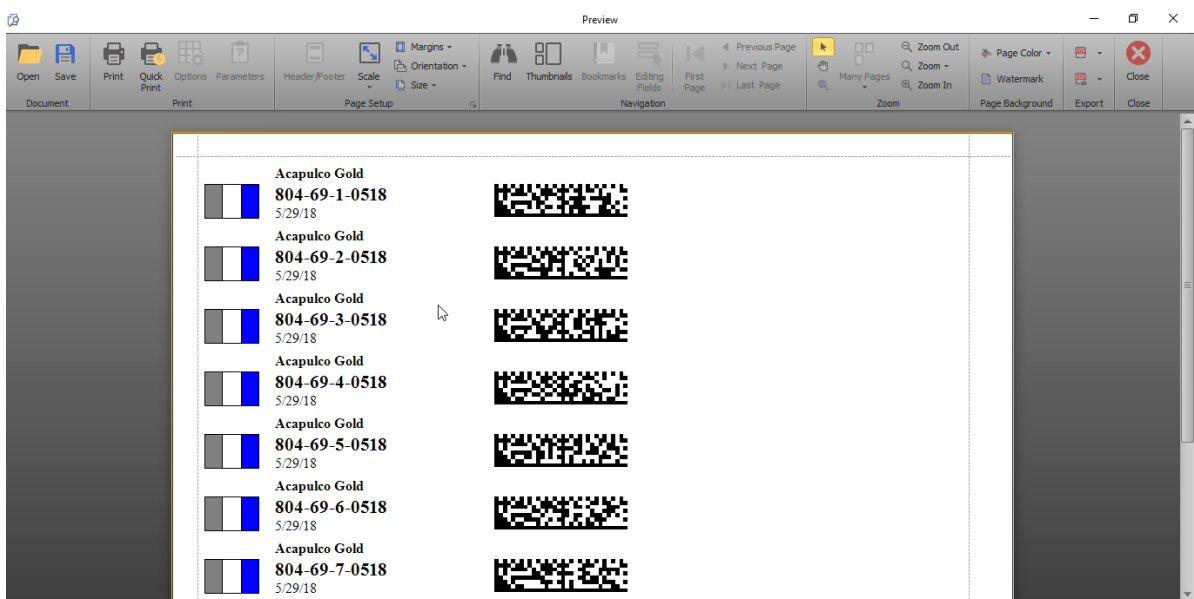
- Step 2 - Click on the **Plants** sub-tab to view all of the Plants in that Grow Batch.



- Step 3 - Select all of the Plants that need Wristbands from the list and click the Show in Report button.



- Step 4 - Verify that the correct Wristbands are populated in the print preview window and click the Print button in the ribbon.



Decode Wristbands

KLĒR THC has color-coded Wristbands based on the Plant's Strain ID to make identifying a Plant's Strain effortless at a glance. Each Strain ID is associated with a 3-digit number and each of those digits is associated with a uniquely-colored rectangle. In addition to Strain ID, Wristbands show the Plant Date and can be printed with or without the Strain name.

The color key is as follows:

0 white	5 green
1 brown	6 yellow
2 red	7 orange
3 purple	8 gray
4 blue	9 black

So for Strain ID 214, the 3-digit number translates to **red-brown-blue** and Wristbands for Plants of this Strain would look like this:



Note: If the Strain ID is a 1-digit or 2-digit number, the initial digits will be zeros. So, for Strain ID 5, the 3-digit translation would be "005".

Scan Wristbands

In order to get the most out of Plant Wristbands, you'll need a standard 2D barcode reader/scanner. This will allow you to easily scan Plants to identify them.