

# Harvest Plants

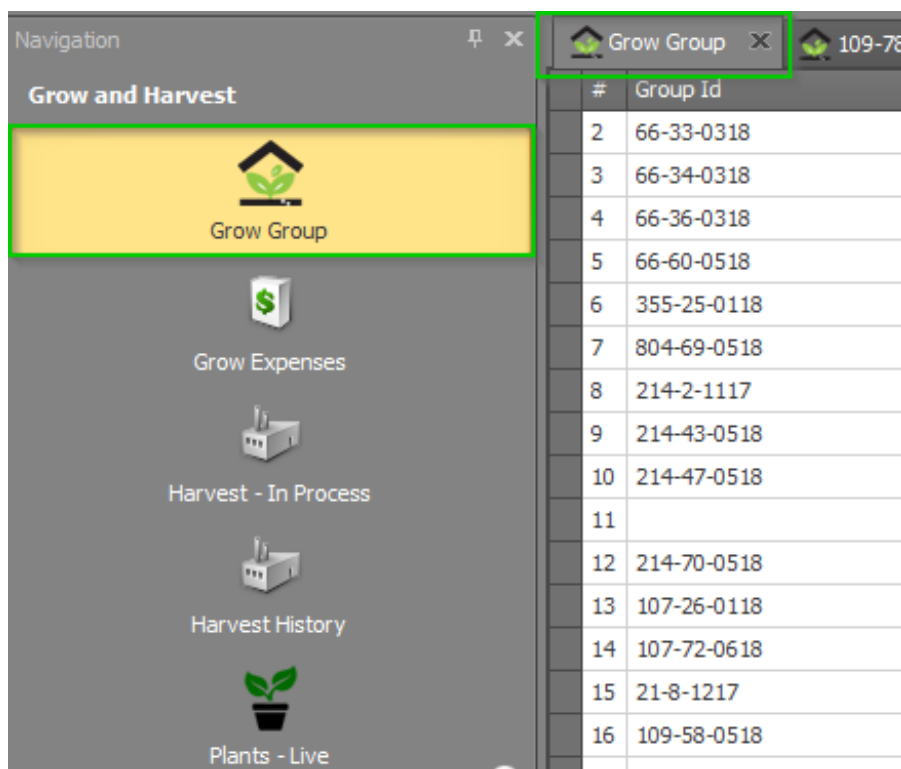
Last Modified on 08/05/2019 12:48 pm MST

When you harvest a Plant, KLĒR THC needs to know about it! There are a number of ways that a Harvested Plant is treated differently by the system, so it can continue to be tracked along its path from seed to sale. Before a Grow Batch can be harvested, all Plants in the Batch must be ready for harvest.

This means that if a Plant has been destroyed, it must also be destroyed in KLĒR THC before harvest can occur on the Grow Batch. This article details how to harvest a Plant to be used for further production.

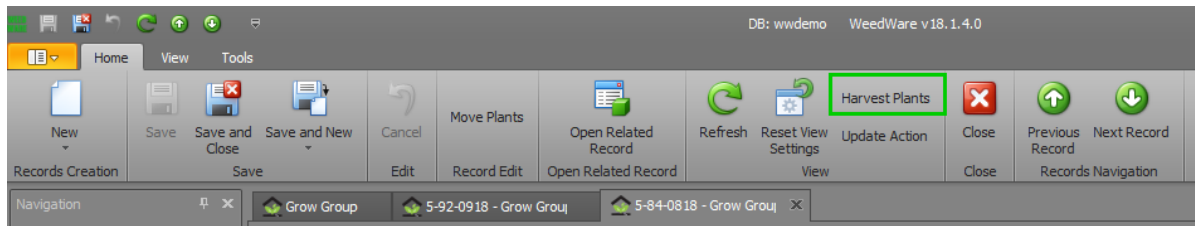
To harvest your Plants in KLĒR THC, follow the steps below:

- Step 1 - From within the **Grow & Harvest Module** under the **Grow Batch** section, select the **Grow Batch** you want to harvest.

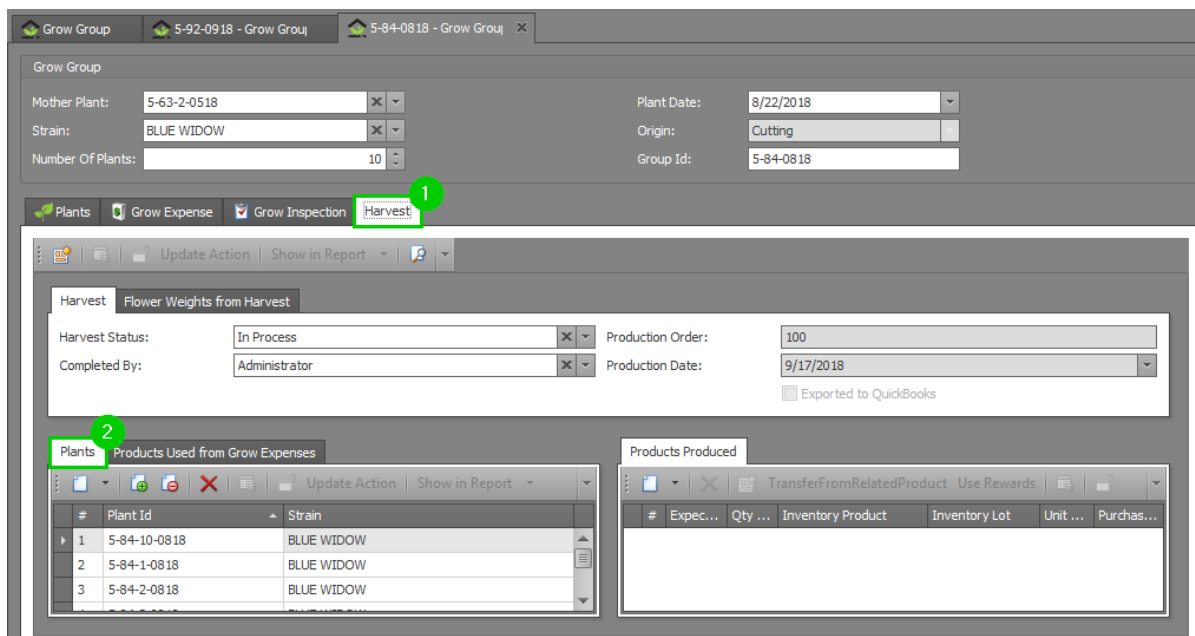


- Step 2 - From the **Grow Batch** detail window, select **Harvest Plants** from the top ribbon. This will harvest all of the available plants in your **Grow Batch**. You will be asked, "Are you sure you want to harvest all available plants in this **Grow Batch**?" If all unusable **Plants** have been destroyed

from the Grow Batch in KLÉR THC and all remaining Plants are ready for Harvest click Yes.



- Step 3 - You will now be able to view your plants in the Harvest tab, so you can begin your Harvest Production Order converting your harvested Plants to flower or trim.



- Step 4 - Click the Save button in the ribbon.

